



825 Town & Country
Lane City Center Bldg. 5 Ste 700
Houston, TX 77024
Phone: 713-351-0700

WHO IS NORTHWIND MIDSTREAM

Northwind Midstream is a midstream company that operates a highly efficient, environmentally focused, and exceedingly reliable midstream system, strategically located within the Delaware basin of Lea County, NM. Northwind manages 177 miles of natural gas gathering pipeline as well as a natural-gas amine treating system designed to manage off-spec gas high in CO₂, H₂S and inerts.

WHAT ARE THE SIGNS OF A NATURAL GAS PIPELINE LEAK?

- Blowing or hissing sound
- Dust blowing from a hole in the ground
- Continuous bubbling in wet or flooded areas
- Gaseous or hydrocarbon odor
- Dead or discolored vegetation in a green area
- Flames, if a leak has ignited

WHAT SHOULD I DO IF I SUSPECT A PIPELINE LEAK?

Your personal safety should be your first concern:

- Evacuate the area and prevent anyone from entering
- Abandon any equipment being used near the area
- Avoid any open flames
- Avoid introducing any sources of ignition to the area (such as cell phones, pagers, 2-way radios)
- Do not start/turn off motor vehicles/ electrical equipment
- Call 911 or contact local fire or law enforcement
- Notify the pipeline company
- Do not attempt to extinguish a natural gas fire
- Do not attempt to operate any pipeline valves

PIPELINE SAFETY

System failures occur infrequently along the nation's network of interstate natural gas pipeline facilities, and many of these are caused by damage from others digging near the pipeline. We watch for unauthorized digging, but we request your help to notify us.

We participate in One-Call Centers and strongly encourage those who are going to dig to call their state One-Call Center or the 811 "Call before you dig" hotline (see below) to allow pipeline companies and owners of other buried utilities a chance to mark the underground facilities in the area before digging begins.

You can also find out where other companies' pipelines are in your area by going to the National Pipeline Mapping System website at www.npms.phmsa.dot.gov.

ALWAYS CALL 811 BEFORE YOU DIG!

PIPELINE LOCATION AND MARKERS

Pipeline markers are used to indicate the approximate location of a natural gas pipeline and to provide contact information. Aerial patrol planes also use the markers to identify the pipeline route. Markers should never be removed or relocated by anyone other than a pipeline operator



EMERGENCY CONTACT:

1-800-954-1888

PRODUCTS/DOT GUIDEBOOK ID#/GUIDE#:

Natural Gas	1971	115
-------------	------	-----

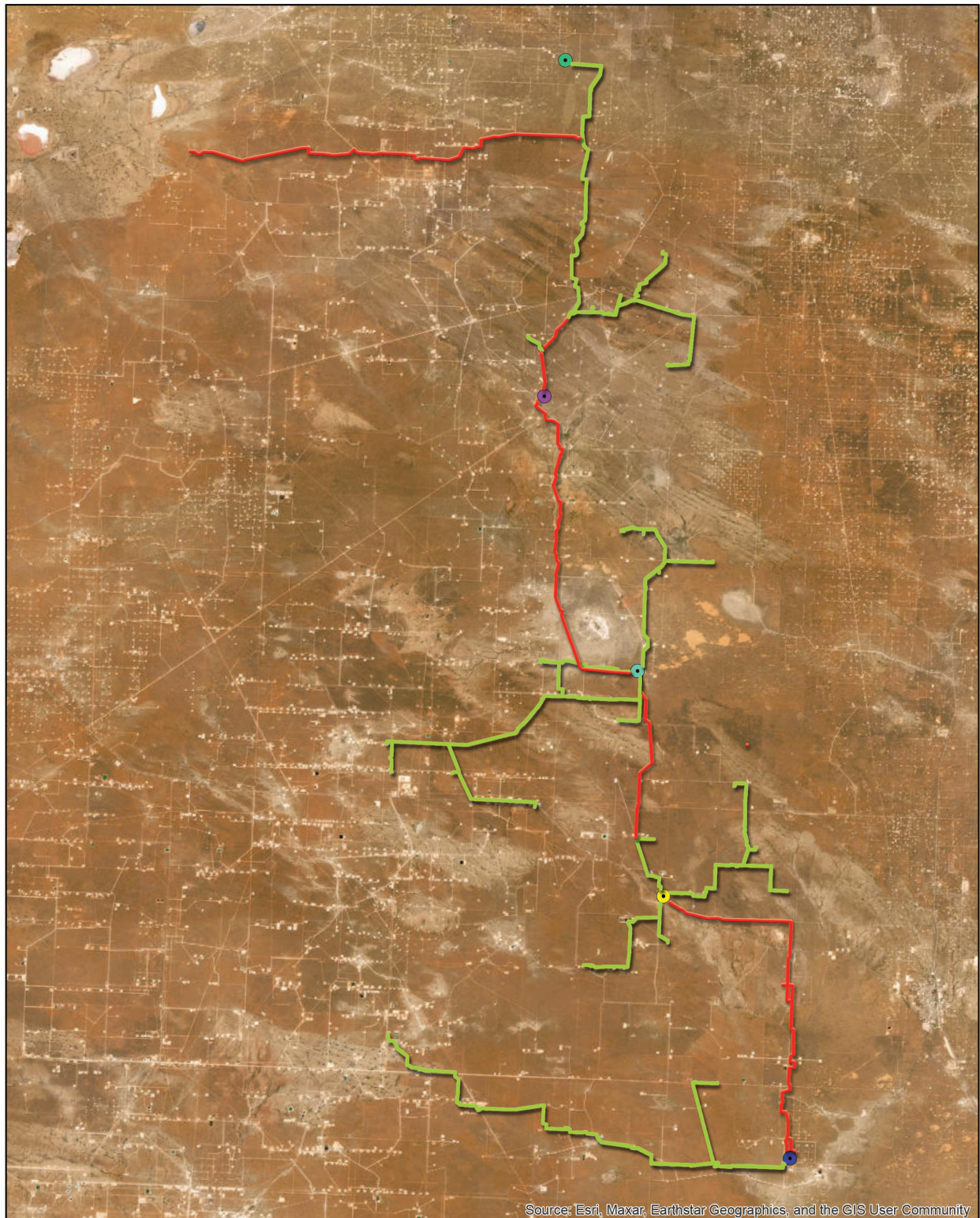
NEW MEXICO COUNTIES OF OPERATION:

Lea

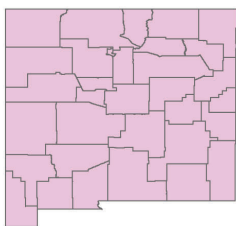
Changes may occur. Contact the operator to discuss their pipeline systems and areas of operation.

EMERGENCY RESPONSE PLANS

An Emergency Response Plan is developed for each pipeline facility to contain, control, and mitigate the various types of emergency conditions/ situations that could occur at one of our facilities. For more information regarding Northwind Midstream's emergency response plans and procedures, contact us directly.



Source: Esri, Maxar, Earthstar Geographics, and the GIS User Community



Legend

- Amine Treater
- Eli Compressor Station
- Flight Compressor Station
- Pelican Compressor Station
- Siege Compressor Station
- Type C Regulated Pipelines
- Type R Non-Regulated Pipelines



192 APPLICABILITY REVIEW TITAN GAS GATHERING SYSTEM

CLASS 1: 64.75 MILES (TYPE C)
112.58 MILES (TYPE R)

LEA COUNTY, NM

PREPARED FOR: NORTHWIND MID. PTNRS LLC
PREPARED BY: B. BLACK DATE: 07/14/2023